

# JMLA Silber - Tonleitern

## Horn (C - g<sup>2</sup>)

portato, legato, staccato



NIEDERÖSTERREICHISCHER  
BLASMUSIKVERBAND

♩ = 108

E - Dur

Two staves of musical notation for the E major scale in C-clef. The first staff contains the first eight notes (E4, F#4, G4, A4, B4, C5, B4, A4) and the second staff contains the remaining notes (G4, F#4, E4, D4, C4, B3, A3, G3).

H - Dur

Two staves of musical notation for the H major scale in C-clef. The first staff contains the first eight notes (C4, D4, E4, F#4, G4, A4, B4, A4) and the second staff contains the remaining notes (G4, F#4, E4, D4, C4, B3, A3, G3).

Fis - Dur

Two staves of musical notation for the Fis major scale in C-clef. The first staff contains the first eight notes (F#4, G4, A4, B4, C5, B4, A4, G4) and the second staff contains the remaining notes (F#4, E4, D4, C4, B3, A3, G3, F#3).

Cis - Dur

Two staves of musical notation for the Cis major scale in C-clef. The first staff contains the first eight notes (C5, D5, E5, F#5, G5, A5, B5, A5) and the second staff contains the remaining notes (G5, F#5, E5, D5, C5, B4, A4, G4).

# JMLA Silber - Tonleitern

## Horn (C - g<sup>2</sup>)

portato, legato, staccato



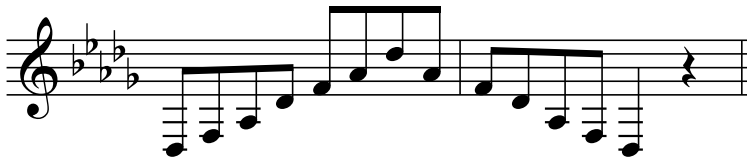
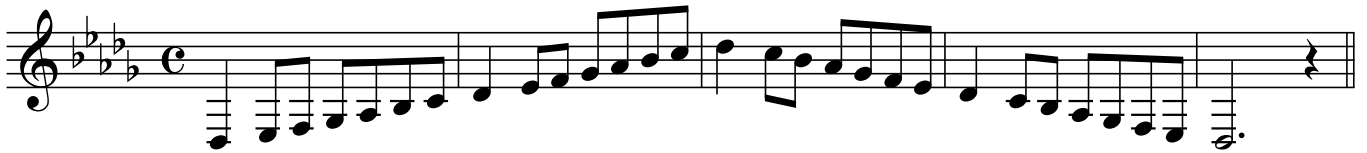
NIEDERÖSTERREICHISCHER  
BLASMUSIKVERBAND

♩ = 108

### As - Dur



### Des - Dur



### Ges - Dur



### Ces - Dur



### cis - Moll



# JMLA Silber - Tonleitern

## Horn (C - g<sup>2</sup>)

portato, legato, staccato



NIEDERÖSTERREICHISCHER  
BLASMUSIKVERBAND

♩ = 108

cis - Moll

gis - Moll

dis - Moll

ais - Moll

# JMLA Silber - Tonleitern

## Horn (C - g<sup>2</sup>)

portato, legato, staccato



NIEDERÖSTERREICHISCHER  
BLASMUSIKVERBAND

♩ = 108

ais - Moll



f - Moll



b - Moll



es - Moll



# JMLA Silber - Tonleitern

## Horn (C - g<sup>2</sup>)

portato, legato, staccato



NIEDERÖSTERREICHISCHER  
BLASMUSIKVERBAND

♩ = 108

es - Moll

as - Moll

chromatische Skala