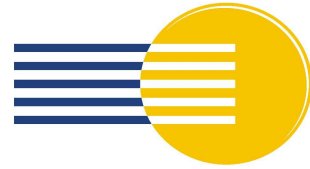


JMLA Bronze - Tonleitern

Klarinette (e - c³)

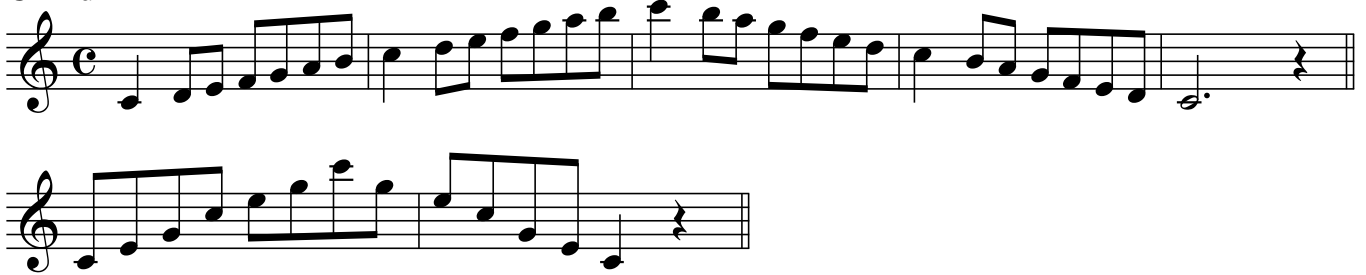
portato, legato, staccato



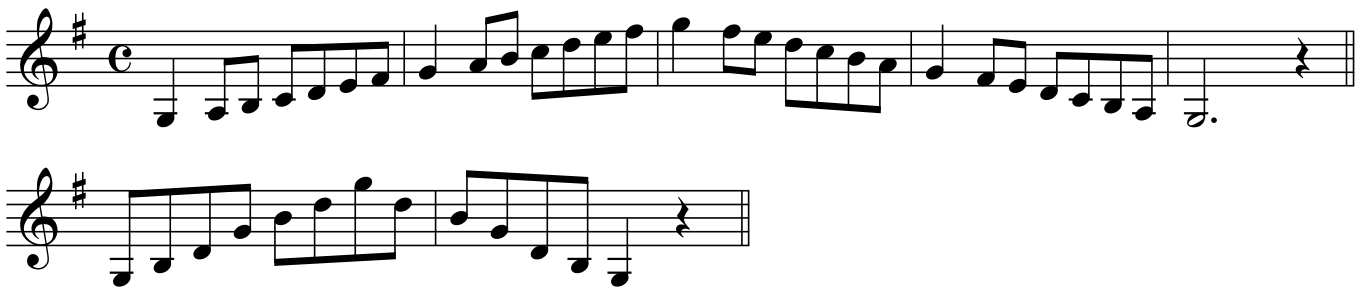
NIEDERÖSTERREICHISCHER
BLASMUSIKVERBAND

♩ = 92

C - Dur



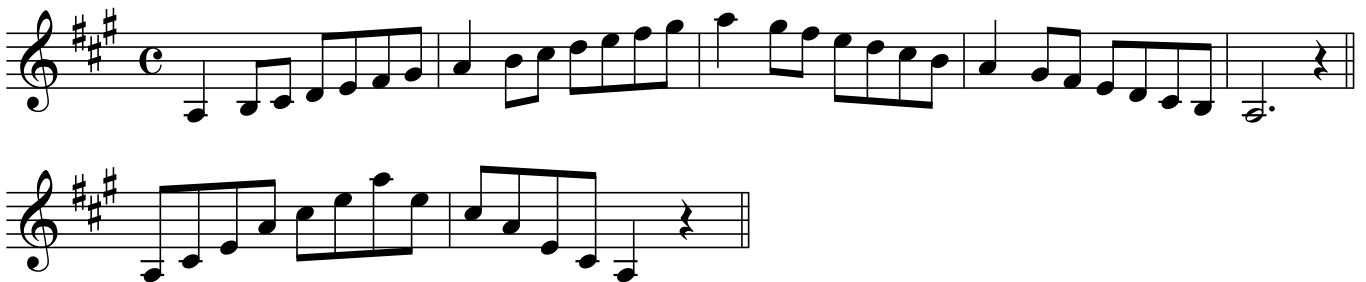
G - Dur



D - Dur



A - Dur



JMLA Bronze - Tonleitern

Klarinette (e - c³)

portato, legato, staccato



NIEDERÖSTERREICHISCHER
BLASMUSIKVERBAND

♩ = 92

E - Dur

Two staves of musical notation for the E major scale. The first staff contains the first line of the scale (E4 to E5), and the second staff contains the second line (E4 to E5). The key signature is three sharps (F#, C#, G#).

F - Dur

Two staves of musical notation for the F major scale. The first staff contains the first line of the scale (F4 to F5), and the second staff contains the second line (F4 to F5). The key signature is one flat (Bb).

Bb - Dur

Two staves of musical notation for the Bb major scale. The first staff contains the first line of the scale (Bb4 to Bb5), and the second staff contains the second line (Bb4 to Bb5). The key signature is two flats (Bb, Eb).

Es - Dur

Two staves of musical notation for the Es major scale. The first staff contains the first line of the scale (Es4 to Es5), and the second staff contains the second line (Es4 to Es5). The key signature is three flats (Eb, Ab, Db).

JMLA Bronze - Tonleitern

Klarinette (e - c³)

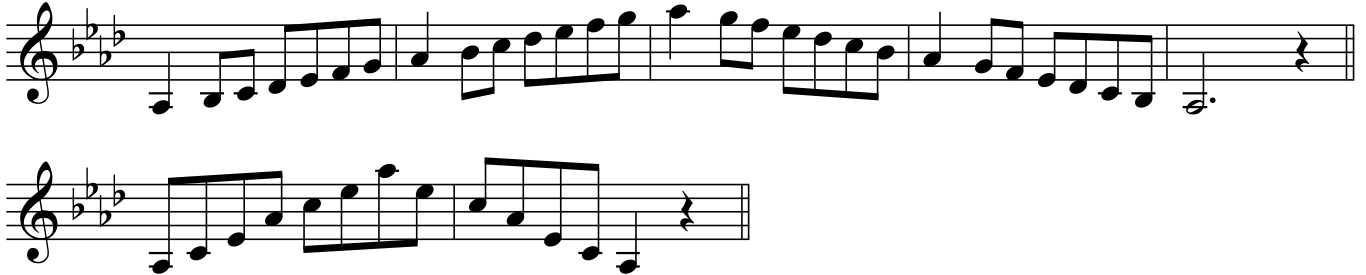
portato, legato, staccato



NIEDERÖSTERREICHISCHER
BLASMUSIKVERBAND

♩ = 92

As - Dur



a - Moll



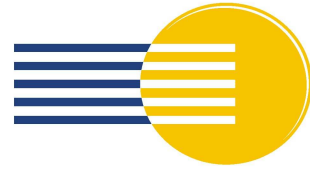
e - Moll



JMLA Bronze - Tonleitern

Klarinette (e - c³)

portato, legato, staccato



NIEDERÖSTERREICHISCHER
BLASMUSIKVERBAND

♩ = 92

h - Moll

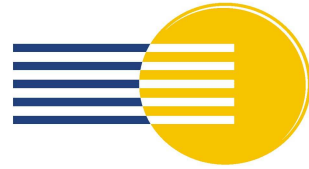
fis - Moll

cis - Moll

JMLA Bronze - Tonleitern

Klarinette (e - c³)

portato, legato, staccato



NIEDERÖSTERREICHISCHER
BLASMUSIKVERBAND

♩ = 92

d - Moll

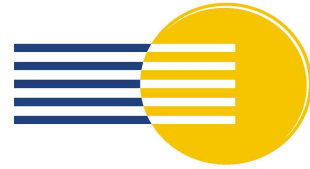
g - Moll

c - Moll

JMLA Bronze - Tonleitern

Klarinette (e - c³)

portato, legato, staccato



NIEDERÖSTERREICHISCHER
BLASMUSIKVERBAND

♩ = 92

f - Moll

chromatische Skala